



ABOULKHER
& Partners Gen. Trd. LLC.

WPC Doors

Introduction:

AKT was established in 2012- Dubai. The company which was established with the state-of-the-art technology to serve the building sectors in UAE and GCC.

One of main products is the wooden PVC composite doors. The naturality of the wood and the durability of the composite PVC were combined with the ease of installation and use.

Applications & Type:

WPC doors are composite materials made of wood fiber, thermoplastic, additives, and PVC film top surface. It can be used for any internal door. It is the ideal solution for areas where high moisture & water resistance, and insects' resistance are required.

Warranty:

Our products has a 5 year warranty

Characteristics:

- Wide range of Shapes, dimensions, and colors.
- Rot & Decay- Resistant.
- Antibacterial and Termite resistant.
- Moisture and Water-Resistant.
- Non-flammable.
- Eco-Friendly.
- Require no maintenance.
- Do not corrode.
- no need for paint or re-paint.
- High-performance in high temperature environment.
- Hard & Durable
- Can be drilled, screwed.



MAIN SERIES



100



100



100



100



100



100



101



103



106



106YK

- 
WATER RESISTANT
- 
RESISTANT TO IMPACTS
- 
ANTI-BACTERIAL
- 
RESISTANT TO MOISTURE
- 
PAINT AND MAINTENANCE ARE NOT REQUIRED
- 
B1 FIREPROOF

								
							WHITE	SASH
								FRAME CORNICE

MAIN SERIES



300



300



300



300



301



301



301



301



305



305



305



305

- 
WATER RESISTANT
- 
RESISTANT TO IMPACTS
- 
ANTI-BACTERIAL
- 
RESISTANT TO MOISTURE
- 
PAINT AND MAINTENANCE ARE NOT REQUIRED
- 
B1 FIREPROOF

	WHITE TEAK		MAPLE		WALNUT		TEAK		DARK WALNUT BAMBINO		SASH
	WHITE		FRAME		CORNICE						

MAIN SERIES



330



330



330



330



331



331



331



331



350



350



351



351

- 
WATER RESISTANT
- 
RESISTANT TO IMPACTS
- 
ANTI-BACTERIAL
- 
RESISTANT TO MOISTURE
- 
PAINT AND MAINTENANCE ARE NOT REQUIRED
- 
B1 FIREPROOF



MAIN SERIES



410



410



410



410



411



411



411



411



412



412



412



412

- WATER RESISTANT**
- RESISTANT TO IMPACTS**
- ANTI-BACTERIAL**
- RESISTANT TO MOISTURE**
- PAINT AND MAINTENANCE ARE NOT REQUIRED**
- B1 FIREPROOF**

WHITE TEAK	MAPLE	WALNUT	TEAK	DARK WALNUT	BAMBOO	SASH	WHITE	FRAME CORNICE

MAIN SERIES



500



500



500




500



500



500

-  WATER RESISTANT
-  RESISTANT TO IMPACTS
-  ANTI-BACTERIAL
-  RESISTANT TO MOISTURE
-  PAINT AND MAINTENANCE ARE NOT REQUIRED
-  B1 FIREPROOF



MAIN SERIES



**2000
ARGENTO MIX**



**2000
WHITE TEAK MIX**



**2000
TEAK MIX**



**2100
MILANO WALNUT MIX**



1134



1134



1132



1132



1122-R



1122-R



1103-R



1103-R

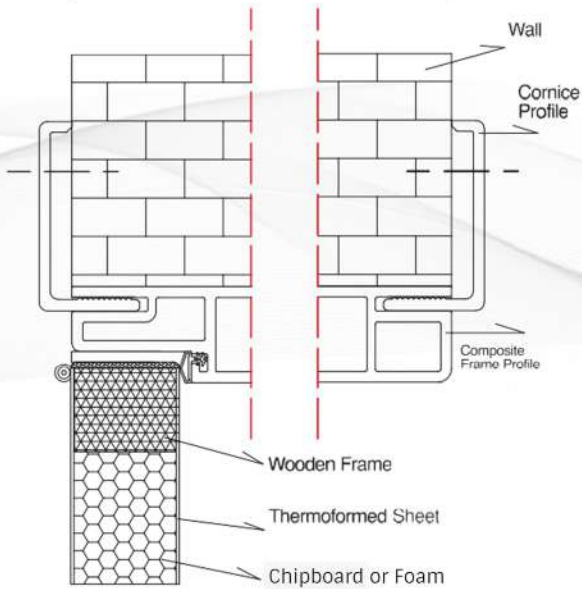
- WATER RESISTANT
- RESISTANT TO IMPACTS
- ANTI-BACTERIAL
- RESISTANT TO MOISTURE
- PAINT AND MAINTENANCE ARE NOT REQUIRED
- B1 FIREPROOF

						SASH
						WHITE
						FRAME CORNICE
WHITE TEAK	MAPLE	WALNUT	TEAK	DARK WALNUT	BAMBOO	

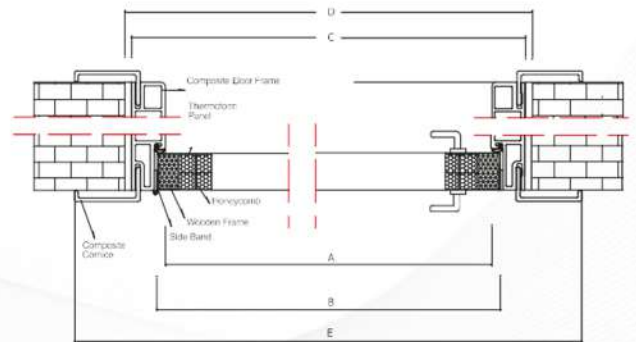
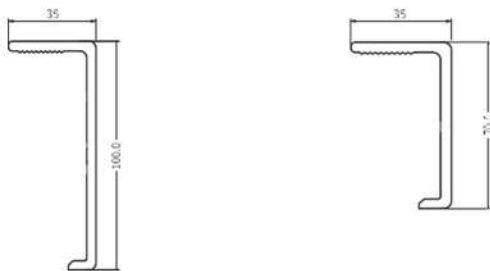




Frame 70 - 100 - 120 - 140 - 160 - 180 - 200 - 220



Door-Frame Connection Detail



- A Sash Width
- B Frame Inner Width
- C Frame Outer Width
- D Completed Wall Width
- E Cornice Outer Width
- F Sash Length
- G Cornice Length
- H Top of Frame to the Bottom of the Sash

Door Frame Fixing Measurements

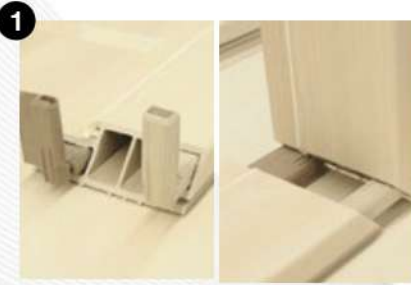
FRAME WIDTH MEASUREMENT

Wall Thickness	Frame Thickness Min.	Frame Thickness Max.
70	70	99
100	100	119
120	120	139
140	140	159
160	160	179
180	180	199
200	200	219
220	220	239

Solid and Melia Leaf Properties

- Wooden Doorpost Frame
- 3 pieces of 26x50 mm doorposts are used on the bottom.
- 6 mm foil coating over MDF.
- Inner core is kraft core and/or fire resistant section.

DOOR ASSEMBLY



1 Frame edge jointing apparatuses are fitted as shown in the figure and their edges are jointed.



2 The frame is placed in the wall gap in the middle. Squeezing pins are placed in the upper and side gaps and fixed by adjusting with the measurement gauge.



3 For Deodara range doors, KAPI label is screwed on the lower and upper edge of the leaf as shown in the figure.



4 Hinges are screwed to the leaf with the upper hinge center 250 mm and lower hinge center 300 mm.



5 Upper hinge center is screwed to the frame as 254 mm from above.



6 Adjust the internal measurement between sash and frame as 3.5 mm by using an adjuster. Frame - Sash balance should be checked again.



7 Apply polyurethane foam in the gap between the frame and wall. After drying, remove the foam residues.



8 Lock is screwed to the drilled area in the frame.



9 Lock and handle suitable for the leaf are fitted by screwing them.



10 Double-side adjusted cornice are cut according to the measurement and fitted by using a plastic hammer.

STACKING CONDITIONS

- 1- Pallet packaging of the door components that will be kept in the stocks should not be opened unless needed.
- 2- Stacking floor should be flat and levelled.
- 3- Stacks should be supported in the horizontal position with minimum 3 wedges. They should not be stacked vertically even in the construction sites.
- 4- Ensure that the wedges to be used for stacking have equal sizes and are not twisted.
- 5- Wedges should be placed in between the stacks to be placed on top of each other at the same level of the wedges on the floor.
- 6- Base pallet should be placed on top of the door leaves that will not be removed for a long time.
- 7- Products should not be stacked in the warehouses with insufficient ventilation and air-conditioning (ensure 22-24 degrees and 8-12% balance moisture).
- 8- Make sure that the products are not exposed to direct sunlight, wind and water.
- 9- Protect the products against any damages that might occur due to the use of forklift for loading and unloading.

OUR ASSEMBLY MATERIALS

Sashe – Cornice- Hinge – Screws- Lock



Tel: +971 4 239 47 91 | Tel: +971 52 837 8486

Address: Office #716 - 7th floor - Business avenue building, 63 22b St - Bur Saeed area - Deira - Dubai - UAE.

E-mail: info@aboukher.com | web: www.aboukher.com